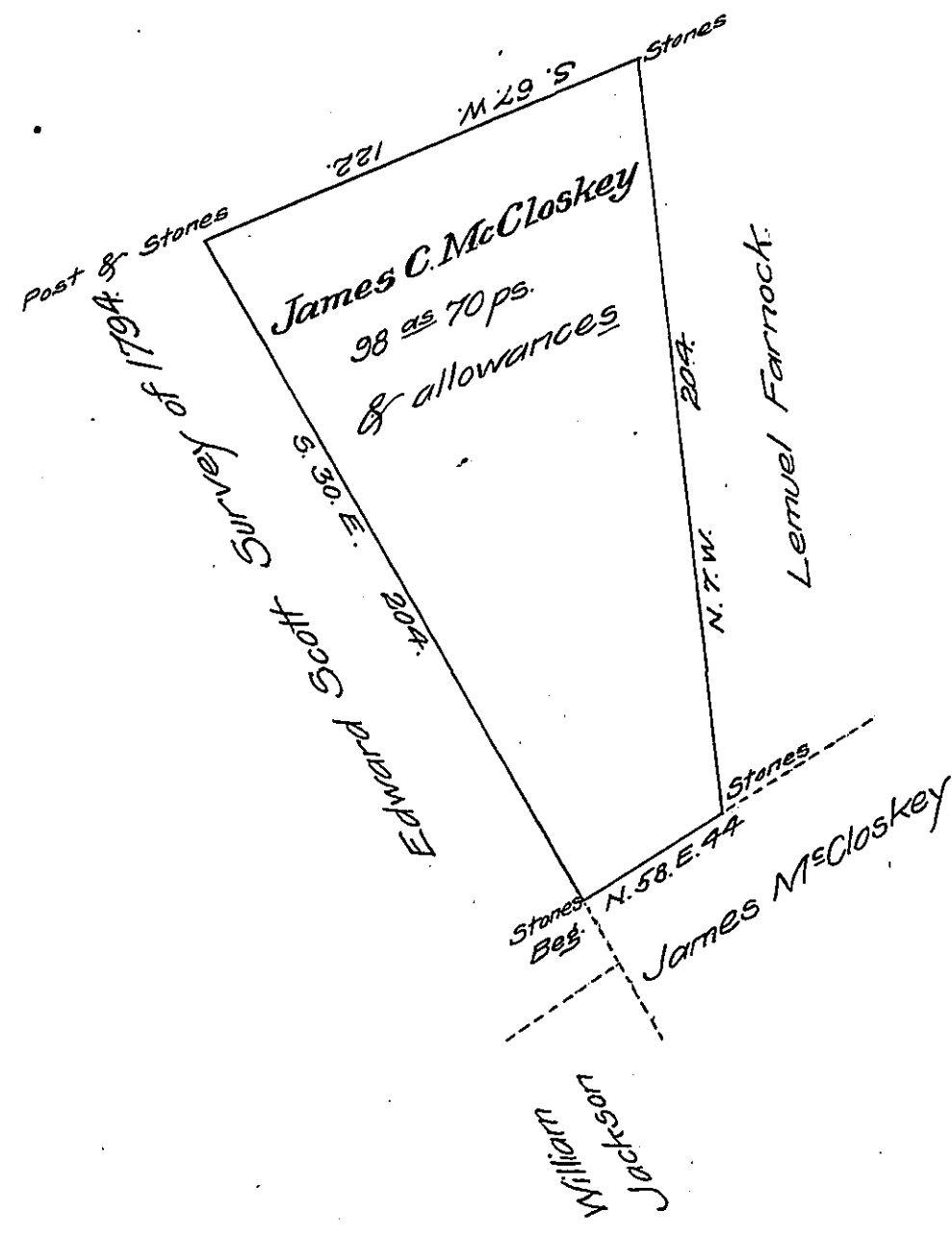


FORM NO. 1.



A DRAFT of a tract of land situated in the Township of Chapman and County of Clinton, containing Ninety Eight acres, Seventy perches and allowance of six per cent. for roads, etc. Surveyed the fifteenth day of June 1899, in pursuance of a warrant granted to Jame-C. McCloskey dated the 23^d day of December A.D. 1841.

John L. Eckel

To James W. Latta, Esq.,
Secretary of Internal Affairs

County Surveyor

I Examined & approve the above Survey this 16 day of November 1903.
J. Davis Eckel County Surveyor.

IN TESTIMONY that the above is a copy of the original remaining on file in the Department of Internal Affairs of Pennsylvania, made comformably to an Act of Assembly approved the 16th day of February 1833, I have hereunto set my hand and caused the Seal of said Department to be affixed at Harrisburg, this eighth day of October 1907.

(Handwritten Signature)
Secretary of Internal Affairs.